



**BST** Aimed for New Technology and High Quality  
**Bosung poly tech co.,LTD.**

32, Nonggongdanji-gil Beolgyo-eup, Boseong-gun,  
 Jeollanam-do, 59418

TEL. 061. 857. 9900~1 FAX. 061.857.7570

E-mail. bst9900@hanmail.net

Aimed for New Technology and High Quality

# BST PIPE



Aimed for New Technology and High Quality  
Bosung poly tech co.,LTD.

<http://www.bstpipe.co.kr>

# BOSUNG POLY TECH

## EXECUTIVES AND STAFFS

BosungPolyTech, Co., Ltd. is a specialist in manufacturing and sales of polyethylene pipe for water supply, polyethylene corrugated pipe for water supply, structural polyethylene sewer pipe (double / multi- wall) coupler for polyethylene sewer pipe, polyethylene-based downspout, PE-composite manhole, pipes for fisheries, floating offshore structure, and corrugated pipe as well as other related structures, which are used for civil engineering, constructions, and fisheries.

Since its establishment, the company has set customer satisfaction as the utmost management policy, and is striving to fulfill the social responsibility. The company has acquired ISO9001 in Quality Management Systems, KS Qualification, Qualification for Excellent Group & Standardized Product, Qualification for Hygiene and Safety, Excellency in Product for Procurement, and the like, to provide best quality and product. The company provides best quality control service, including its perfected A/S.

The technology obtained through experience and with cutting-edge facility, the company promises to make the most in developing new products, and to realize customer satisfaction with best quality.

Thank you.

# History is

- 2017 Entered Alibaba GGS (Global Golden Supplier)  
First Export to China, amounting to USD 26,000
- 2016 Environmental Mark Acquired from Korea Environmental Industry & Technology Institute (No. 12806)  
-Drainpipe for discharging recycled plastics (Double / Multi- Wall) Acquired KS M 3408-3 Authentication from Korean Standards Association  
-Plastic Pipe-based Polyethylene-3rd Part Corrugated pipe for Water Supply  
Designated as Excellent Product for Procurement by Public Procurement Service
- 2015 Registered Patent (No.1505052) FLOORING PIPE HAVING IMPROVED HEAT AND WEAR RESISTANCE FOR THERMOELECTRIC POWER PLANT FLOORING TRANSFER
- 2014 K-Mark Acquired by Korea Testing Laboratory (Coupler-combined PE Double / Multi- Wall Sewer Pipe)
- 2012 Authenticated for Structural Polyethylene Pipe for Water Supply and Sewer (KS M 3500-1, 3500-2) by Korea Standards Association  
Registered Patent (No. 1129476) for HIGH-TEMPERATURE PIPE  
Acquired Authentication for Hygiene and Safety Standard from Korea Water and Wastewater Works Association.  
KPS M 2017 Acquired for Excellent Group and Standard Product
- 2011 Registered Patent (No.0920808), SEALING AND PIPE CONNECTION SOCKET USING SAME SEALING
- 2010 Acquired KS M 3408-2 for Plastic Pipe System for Water Supply by Korea Standards Association
- 2008 Admitted for Newly Available Material for Construction [BF3P] by Korea Land Corporation
- 2006 Selected as an INNOBIZ Company (Small and Medium Business based on Technology and Innovation)  
Selected as Excellent Product for Procurement by the Public Procurement Service [Flange-type Electric-Fused Multi-layered Sewer Pipe]
- 2005 Excellent Product Mark (GQ) Authentication (for PE Double-wall and Multi-layered Sewer Pipe) Acquired  
Registered Design (No. 0392468)  
Addition of Multi-layered Pipe in KS M 2009 from KFPIK Excellent Group with Standard Product  
Registered Utility Model (No.0353919) for PE Electric-fused Corrugated pipe
- 2004 Additional Authentication for 2-story Pipe in KS M3408-2 (PE Water Supply Pipe)
- 2003 KPS M 2009 Acquired for Double-wall Sewer Pipe from KFPIK  
KS M 3408(PE Water Supply Pipe) Acquired
- 2002 Q Mark (Quality Assurance for Double-wall PE Pipe) Acquired  
ISO 9001 Acquired
- 2001 Establishment of BosungPolyTech, Co., Ltd.

# Polyethylene Pipe for Water Supply

KS M 3408-2

## Product Use

- **Basic use** - Water Supply, Water Distribution, Feedwater
- **Applied use** - Agriculture, Seawater for Industry use, Dredging, Leachate, Chemicals, Aquafarm, Pool, PLANT, Sprinklers in Golf Courses, Firefighting Equipment



## Basic Properties

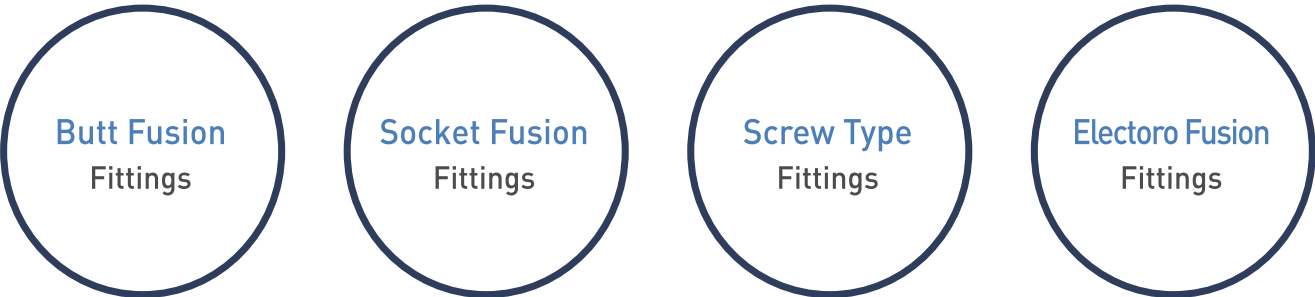
Items	Unit	Repr. Value
<b>Indices of Application</b> (190℃, 2.16kg)	g/10min	0.12
<b>Density</b>	g/cm <sup>3</sup>	0.958
<b>Tensile Strength</b> (Yield Point)	kg/cm <sup>2</sup>	220
<b>Elongation</b>	%	>600
<b>Bending Elasticity</b>	g/cm <sup>2</sup>	8,500
<b>Hardness</b>	R Scale	30
<b>Impulse Strength</b>	kg cm/cm	>50

Items	Unit	Repr. Value
<b>Environmental Stress Crack Resistance</b>	hr, F50	>5,000
<b>Melting Point</b>	℃	132
<b>Softening Point</b>	℃	122
<b>Oxidative Induction Time (200℃)</b>	min	>40
<b>Deformation Temperature</b>	℃	60
<b>Brittle Temperature</b>	℃	<-70
<b>Carbon Black Contents</b>	%	2.3

### Features

- Chemical Stability
- Hygiene
- Fluidity
- Flexibility
- Light-weight
- Combining Capability
- Corrosion Resistance
- Impact Resistance
- Cold Resistance
- Wear Resistance
- Economic Feasibility

## Connection of Pipe



■ Product Specifications (Wall Thickness)

SDR-TYPE												
	SDR 9		SDR 11		SDR 13.6		SDR 17		SDR 21		SDR 26	
PE 80	PN 16		PN 12.5		PN 10		PN 8		PN 6 <sup>(3)</sup>		PN 5	
PE 100	PN 20		PN 16		PN 12.5		PN 10		PN 8		PN 6 <sup>(3)</sup>	
Dimensions	Wall Thickness <sup>(2)</sup>											
	e min	e max	e min	e max	e min	e max	e min	e max	e min	e max	e min	e max
16	2.0 <sup>(3)</sup>	2.3	-	-	-	-	-	-	-	-	-	-
20	2.3 <sup>(3)</sup>	2.7	2.0 <sup>(3)</sup>	2.3	-	-	-	-	-	-	-	-
25	3.0	3.4	2.3 <sup>(3)</sup>	2.7	2.0 <sup>(3)</sup>	2.3	-	-	-	-	-	-
32	3.6	4.1	3.0	3.4	2.4	2.8	2.0 <sup>(3)</sup>	2.3	-	-	-	-
40	4.5	5.1	3.7	4.2	3.0	3.5	2.4	2.8	2.3 <sup>(4)</sup>	2.3	-	-
50	5.6	6.3	4.6	5.2	3.7	4.2	3.0	3.4	2.4	2.8	2.0	2.3
63	7.1	8.0	5.8	6.5	4.7	5.3	3.8	4.3	3.0	3.4	2.5	2.9
75	8.4	9.4	6.8	7.6	5.6	6.3	4.5	5.1	3.6	4.1	2.9	3.3
90	10.1	11.3	8.2	9.2	6.7	7.5	5.4	6.1	4.3	4.9	3.5	4.0
110	12.3	13.7	10.0	11.1	8.1	9.1	6.6	7.4	5.3	6.0	4.2	4.8
125	14.0	15.6	11.4	12.7	9.2	10.3	7.4	8.3	6.0	6.7	4.8	5.4
140	15.7	17.4	12.7	14.6	10.3	11.5	8.3	9.3	6.7	7.5	5.4	6.1
160	17.9	19.8	14.6	16.4	11.8	13.1	9.5	10.6	7.7	8.6	6.2	7.0
180	20.1	22.3	16.4	18.2	13.3	14.8	10.7	11.9	8.6	9.6	6.9	7.7
200	22.4	24.8	18.2	20.5	14.7	16.3	11.9	13.2	9.6	10.7	7.7	8.6
225	25.2	27.9	20.5	22.7	16.6	18.4	13.4	14.9	10.8	12.0	8.6	9.6
250	27.9	30.8	22.7	25.4	18.4	20.4	14.8	16.4	11.9	13.2	9.6	10.7
280	31.3	34.6	25.4	28.6	20.6	22.8	16.6	18.4	13.4	14.9	10.7	11.9
315	35.2	38.9	28.6	32.2	23.2	25.7	18.7	20.7	15.0	16.6	12.1	13.5
355	39.7	43.8	32.2	36.3	26.1	28.9	21.1	23.4	16.9	18.7	13.6	15.1
400	44.7	49.3	36.3	40.9	29.4	32.5	23.7	26.3	19.1	21.2	15.3	17.0
450	50.3	55.5	40.9	45.4	33.1	36.6	26.7	29.5	21.5	23.8	17.2	19.1
500	55.8	61.5	45.4	50.8	36.8	40.6	29.7	32.8	23.9	26.4	19.1	21.2
560			50.8	57.2	41.2	45.5	33.2	36.7	26.7	29.5	21.4	23.7
630			57.2		46.3	51.1	37.4	41.3	30.0	33.1	24.1	26.7

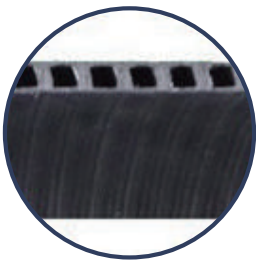
# Structural Polyethylene Sewer Pipe

KPS M 2009, KS M 3500-1, KS M 3500-2

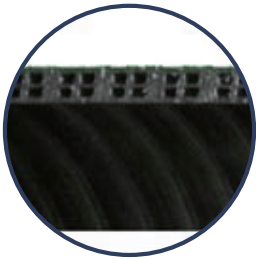
## Product Use

- For Sewer Treatment, Agriculture, Wastewater, Rainwater, Water Supply, Livestock Wastewater Treatment Facility, Pipes for Land Readjhurstment and Development

- **Double-wall** - Made of mechanical extrusion of high density polyethylene (HDPE)



- **Multi-wall** - Made of mechanical extrusion of high density polyethylene (HDPE), reinforced as “+” shape within the profile



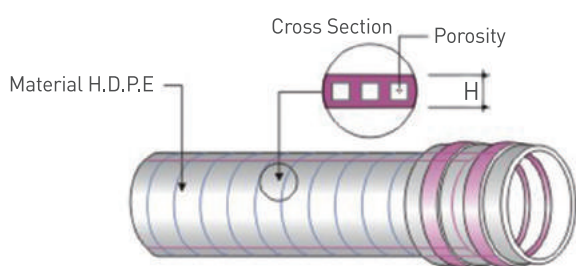
## Product Size

Unit(mm)				
Name	Average Inner Diameter Tolerance	Double-wall Thickness	Multi-wall Thickness	Length
150	± 4.5	13	15	4 or 6(m)
200	± 5.1	14	16	
250	± 5.1	15	17	
300	± 5.1	19	20	
350	± 5.1	22	24	
400	± 5.1	25	30	
450	± 5.1	29	30	
500	± 5.1	31	35	

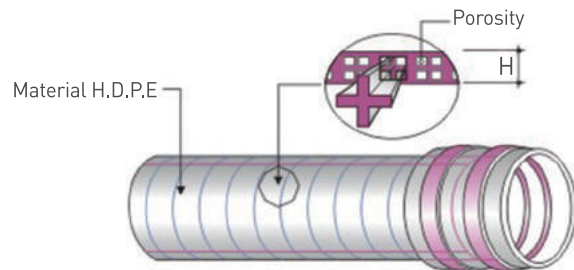
Unit(mm)				
Name	Average Inner Diameter Tolerance	Double-wall Thickness	Multi-wall Thickness	Length
600	± 5.1	39	47	4 or 6(m)
700	± 6.4	44	50	
800	± 6.4	50	58	
900	± 6.4	56	62	
1000	± 6.4	62	75	
1200	± 6.4	75	95	
1500	± 7.6	95	105	

## One-way type / Socket type

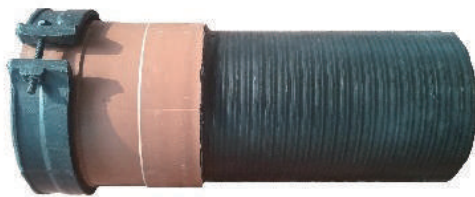
- High Density Polyethylene (HDPE) is mechanically extruded to form a double / multi-layer structure. The end portion of the structure is integrated with one-way socket



**Double-wall type with one-way socket**



**Multi-wall type with one-way socket**



**Socket type**



**Socket type Cross Section**

## Sewer Pipe Coupler

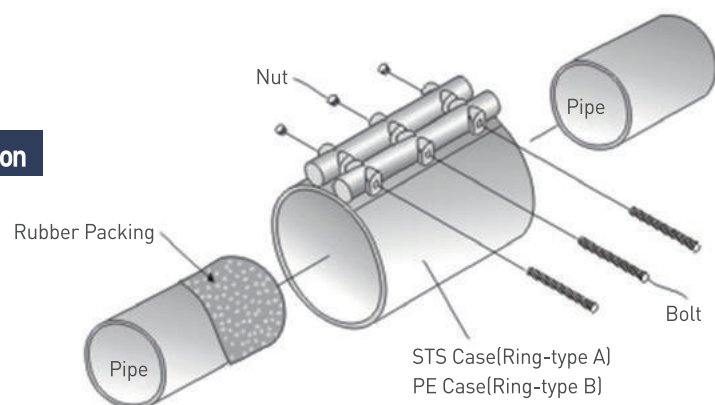
- Cylindrical rubber is inserted to the pipe, covered by STS or PE case, and jointed by bolt



**Ring-type A for support and combination**



**Ring-type B for support and combination**



# Types and Sizes of Fittings

## Joint pipe in Sewer System- Types and Sizes

<b>45° Elbow</b> D150 ~ D1500 	<b>90° Elbow</b> D150 ~ D1500 	<b>Pipe Connector</b> D150 ~ D1500 
<b>EQUAL TEE</b> D150 ~ D1500 	<b>UNEQUAL TEE</b> D200×150~D1500×1000 	<b>Saddle Manifold</b> D150 ~ D300 

## Joint pipe in Water Supply System – Types and Sizes

### • Butt Fusion Fittings

<b>Socket</b> D20~D63 	<b>45° Elbow</b> Socket Welding D20~D63 Butt Welding D90~D800 	<b>90° Elbow</b> Socket Welding D20~D63 Butt Welding D90~D800 
<b>Equal Tee</b> Socket Welding D20~D63 Butt Welding D90~D800 	<b>Reduced Tee</b> Socket Welding D32X25 ~ D90X63 Butt Welding D110X50 ~ D800X710 	<b>Flange adapter(Stub End)</b> Socket Welding D20~D63 Butt Welding D110~D1000 
<b>End Cap</b> Socket Welding D20~D63 Butt Welding D90~D630 	<b>Reducer</b> Socket Welding D32X25 ~ D90X63 Butt Welding D110X50 ~ D800X710 	

### • Electoro Fusion Fittings

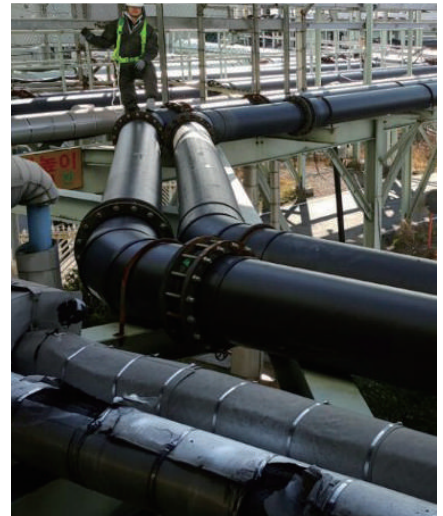
<b>Socket</b> D40~D400 	<b>45°, 90° Elbow</b> D40~D315 	<b>Equal Tee Reduced Tee</b> D50X40 ~ D315X315 
---	---	---

### • Screw Type Fittings

<b>Socket</b> D20~D110 	<b>45° Elbow</b> D20~D100 	<b>90° Elbow</b> D20~D100 
<b>Reducer</b> D25X20 ~ D110X90 	<b>Equal Tee</b> D20~D110 	<b>Valve Socket</b> D20~D110 

# Pipes for Industrial Uses

■ Pipes for Transferring Chemical Substances / Plant Pipe / Firefighting Equipment, etc.

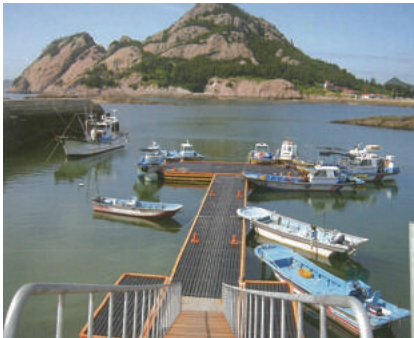


# Offshore Floating Structures

## Product Use

- **Gangway and Pier for Docking Facility** - Maritime Police, Public Office, Guidance Boat, Fishing Boat, Ferries
- **Offshore Amenities** - Offshore Toilet
- **Recreational Structures** - Houses on Water
- **Live Experience on Fishing Village, Mud-Flat** - Trail Ways on Mud-Flat, Entrance to Fishing Ground
- **Floating-type Pool** - Fixed/Mobile Floating Pool
- **Offshore Fishing Park** - Barge-type Fishing Facility

## Examples



Docking Facility



Offshore Toilets



Floating-type Pool



Houses on Water



Offshore Fishing Parks



Entrance to Mud Flat or Fishing Ground

# Fishery Pipe

## Product Use

- **Aquafarm** – Rectangular and circular shapes
- **Seawater Pull-in** – Deep ocean water supply, fish market, seawater pull-in
- **Multi-purpose Barge** – Barge for collecting marine wastes, recreational barge

## Examples



Aquafarms



Seawater Pull-in



Multi-purpose Barge